



# TampaBaySteel

*Metals Ready for Business™*

(800) 283-0475 • (813) 621-4738 • [www.TampaBaySteel.com](http://www.TampaBaySteel.com)

As one of Florida's major steel distribution and metal processing sources, we stock a vast inventory of sizes, types and grades of metals. Our extensive processing capabilities will ensure that the metals you require are Ready for Business.

## Products

### Carbon Alloy-Plate & Sheet

- A36
- ABS-A
- A572-50
- A709
- A656-80
- AR400F
- A588
- A514
- A516-70
- Domex
- Cold Rolled
- HR P&O

### Grating & Expanded Metal

- Carbon & Stainless
- Galvanized
- Uncoated

### Structural

- A36
- A992
- A709
- A572

### Stainless Shapes

- 304/304L
- 316/316L

### Stainless Plate & Sheet

- 304/304L
- 316/316L
- 317L
- 904L
- 2205 Duplex

### Pipe & Tube

- A500B (uncoated)
- A53 (coated)
- A513
- Galvanized Pipe

### Aluminum Plate & Sheet

- 6061 - T6
- 5052 - H32
- 3003 - H14

## Services

### Tube Laser

- Mazak FG - 220 DDL
- 3-D Laser Cutting
- Pipe up to 8.66" OD
- Structural Shapes up to 6" x 6"
- Max Length 26'

### Laser Cutting

- Fiber Optic
- 60x120 Capacity
- Material thickness:
  - Mild Steel - 3/4" max.
  - Stainless Steel - 3/4" max.
  - Aluminum - 1/2" max.

### CNC Burning

- Plasma & Flame Cutting
- Material Size:
  - Up to 120" x 480"
- Material Thickness:
  - Up to 2 1/2" stainless
  - 8" Carbon
- CNC Contour Beveling
- ARC writing

### Saw Cutting

- Horizontals:
  - Up to 28"H x 20"W
- Verticals:
  - 18"H x 20"W
- Miter cutting up to 60°
  - 12" x 12" (+/-) 1°

### Angle Line

- Angles & Flat Bar
- Punching, Shearing, Notching

### Precision Forming

- Press Brakes:  
Bending Capabilities
- Up to 485 Tons
  - Up to 16' in length

### Machining

- CNC Vertical Mills:
- Up to VF11
  - Up to 40" x 120" capable work area

### Shearing

- Through 3/8" thick
- Through 12' length

### Waterjet Cutting

- 115" x 238" maximum bed size
- CNC Contour Beveling
- Up to 10" thick

SERVING THE  
METALS INDUSTRY  
**SINCE 1980**

**ISO 9001: 2015  
CERTIFIED**



**Tube Laser Cutting**



**Laser Cutting**



**CNC Burning**



**Waterjet Cutting**



**Forming**



**Machining**



**Angle Line Cutting**



**Saw Cutting**



**Shearing**



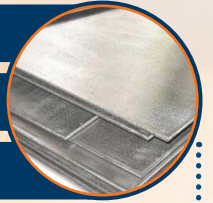
**TampaBaySteel**

*Metals Ready for Business™*

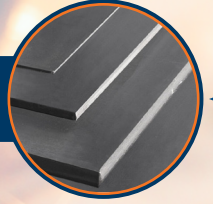
**Carbon Steel**

**Stainless Steel**

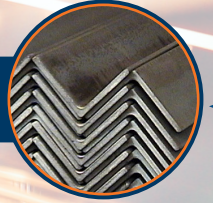
**Aluminum**



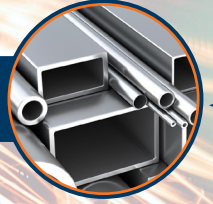
**Sheet & Plate**



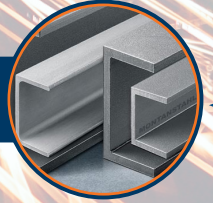
**Flat Bar & Angle**



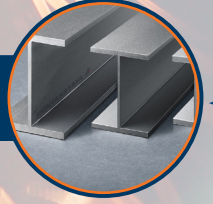
**Pipe & Tube**



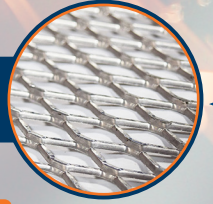
**Channel**



**Beams**



**Expanded Metal**



SERVING THE  
METALS INDUSTRY  
**SINCE 1980**

**ISO 9001: 2015  
CERTIFIED**